

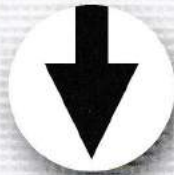


# WallMix

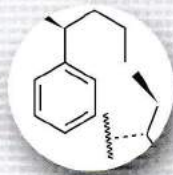
Plastering Mortar Enhancer



Workability



Reduce Cracks



Water Retention



Economical



ECO

# PRODUCT SPECIFICATIONS

## WALLMIX 188



Properties	:	High Water Retention Slower Setting Time Allow Better Workability Reduce Cracks
Water Retention Level	:	HIGH
Recommended Formula	:	50kg Cement : 200kg - 300kg Sand : 150g <b>Wallmix</b>
Recommended Brick Types	:	1) Clay Bricks 2) Sand Bricks 3) Others
Scenario	:	<ul style="list-style-type: none"> <li>• <b>Wallmix 188</b> gives slower setting time due to its high water retention level</li> <li>• Help reducing cracks</li> <li>• Promote better workability</li> <li>• Best use for Clay Bricks</li> </ul>

## WALLMIX 178



Properties	:	Moderate Water Retention Moderate Setting Time Allow Better Workability Reduce Cracks
Water Retention Level	:	MODERATE
Recommended Formula	:	50kg Cement : 200kg - 300kg Sand : 150g <b>Wallmix</b>
Recommended Brick Types	:	1) Sand Bricks 2) Clay Bricks 3) Other
Scenario	:	<ul style="list-style-type: none"> <li>• <b>Wallmix 178</b> gives moderate setting time, which makes it suitable for various type of bricks.</li> <li>• Help reducing cracks</li> <li>• Promote better workability</li> <li>• Best use for Sand Bricks</li> </ul>